



FLORIDA PUBLIC
ARCHAEOLOGY
NETWORK

WWW.FLPUBLICARCHAEOLOGY.ORG

Southeast Region – Annual Report
July 2020 to June 2021

Sara Ayers-Rigsby, MA, RPA, Director
Malachi Fenn, MA, RPA, CIG, Public Archaeology Coordinator
Micheline Hilpert, MA, Archaeology Research Aide/Office Manager

**Highlight-Archaeology Bootcamp
with the Bureau of Land Management
at the Jupiter Inlet Lighthouse
Outstanding Natural Area**

In March of 2021, the Florida Public Archaeology Network (FPAN) Southeast Office partnered with the Bureau of Land Management and the Jupiter Inlet Lighthouse Outstanding Natural Area for their fourth annual Archaeobootcamp.

This program draws students from all over the country to learn about the science of archaeology and Florida's unique past. Typically held in person, the program in 2021 was conducted using a hybrid model combining virtual evening lectures for students across the United States with optional in-person fieldwork for local students. A total of sixteen students participated in the program. The students represented both local universities, like Florida Atlantic University in Boca Raton, and universities further away, with one student attending from the University of Hawaii.

The virtual portion of the program consisted of interactive evening classes focused on a range of topics. The first highlighted the Bureau of Land Management, featuring Associate Deputy State Director Natural Resources Anthony Bobo and Program Manager for the Jupiter ONA Peter De Witt. Other classes focused on technical skills such as QGIS with guest lecturer Dr. Lindsey Cochrane from the University of Georgia, photogrammetry, and scientific illustration. The final class consisted of a career panel with John Sullivan, State Archaeologist-Tribal Liaison and Deputy Preservation Officer for the Bureau of Land



Photo 1: FPAN Staff and bootcamp students screen for artifacts with lighthouse in the background

Management's Eastern States Office, Southeastern States District Office and Dr. Alexandra Jones of DC based non-profit Archaeology in the Community.

Students who came to the field had the opportunity to excavate a post-World War II era trash dump and process the artifacts on site. This was a valuable opportunity for many students with no prior field experience to real world skills that will be useful in their future careers. Students also had the opportunity to interact with BLM and FPAN staff to ask questions about their career path and educational background.

In addition to the program for the students, activities on site were promoted to the general public. Over 50 people came to visit the physical excavation over the course of fieldwork in March, and live events including a guest lecture about the site's history from Josh Liller, Historian for the Jupiter Lighthouse and Museum, and a live Facebook event from the site and a subsequent Facebook live event from processing artifacts in the lab reached a combined total of 2,200 people.

**First Quarter July-September 2020:
Support for Host Institution: Welcome New Graduate Assistants, Diana and Winston**

This August, FPAN SE welcomed two new FAU graduate students to the team: Diana Hutchison and Winston Miller. Diana Hutchison has a background as a science educator and plans to complete lithic analysis for her graduate work. Winston Miller has completed an internship with NPS in Hawaii, and is interested in emergency planning and management for museums and collections. They are hard at work in south Florida contributing to social media accounts, visiting sites for Heritage Monitoring Scouts (HMS), and developing their own outreach projects with FPAN.

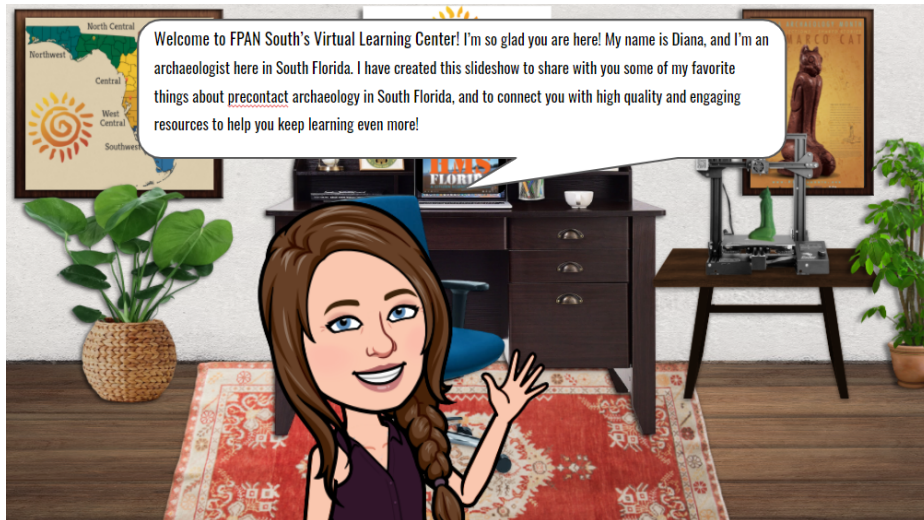


Second Quarter October-December 2020:

Thinking like a network: HMS Workshops

In November, FPAN SE staff partnered with Windley Key Fossil Reef Geological State Park to host a small, socially distanced HMS workshop that would be compliant with COVID 19 policies. Accordingly, scouts completed the classroom portion of the training virtually online, before meeting up with FPAN and park staff to complete the in person portion. Monroe County is vulnerable to sea level rise, and tracking changes to these archaeological sites over time will provide valuable data about threats to site.

Third Quarter January 2021-March 2021:



Outreach and Education: Virtual Classroom

FPAN Graduate Assistant Diana Hutchison created a virtual classroom featuring lessons about archaeology in South Florida. Students can navigate the site

to learn more about the region, including monumental earthworks, shell tools, the Miami Circle, and many other highlights. Students can also learn more about archaeology through exploring a virtual laboratory and art galleries. Check out the virtual classroom [here!](#)

Fourth Quarter April 2021-June 2021

Education and Outreach: Archaeology Merit Badge with the Scouts of America and the Bureau of Land Management

In April, FPAN SE staff partnered with the Bureau of Land Management at the Jupiter Inlet Lighthouse Outstanding Natural Area to host an Archaeology Merit Badge for the Scouts of America. Scouts camped out underneath the lighthouse and over the course of the three-day program had the opportunity to make replica artifacts, learn about the techniques archaeologists use when they investigate a site, and analyze commonalities between resource allocation across various cultures globally.



Photo 3: Diana Hutchison demonstrates flint-knapping to a group of scouts